

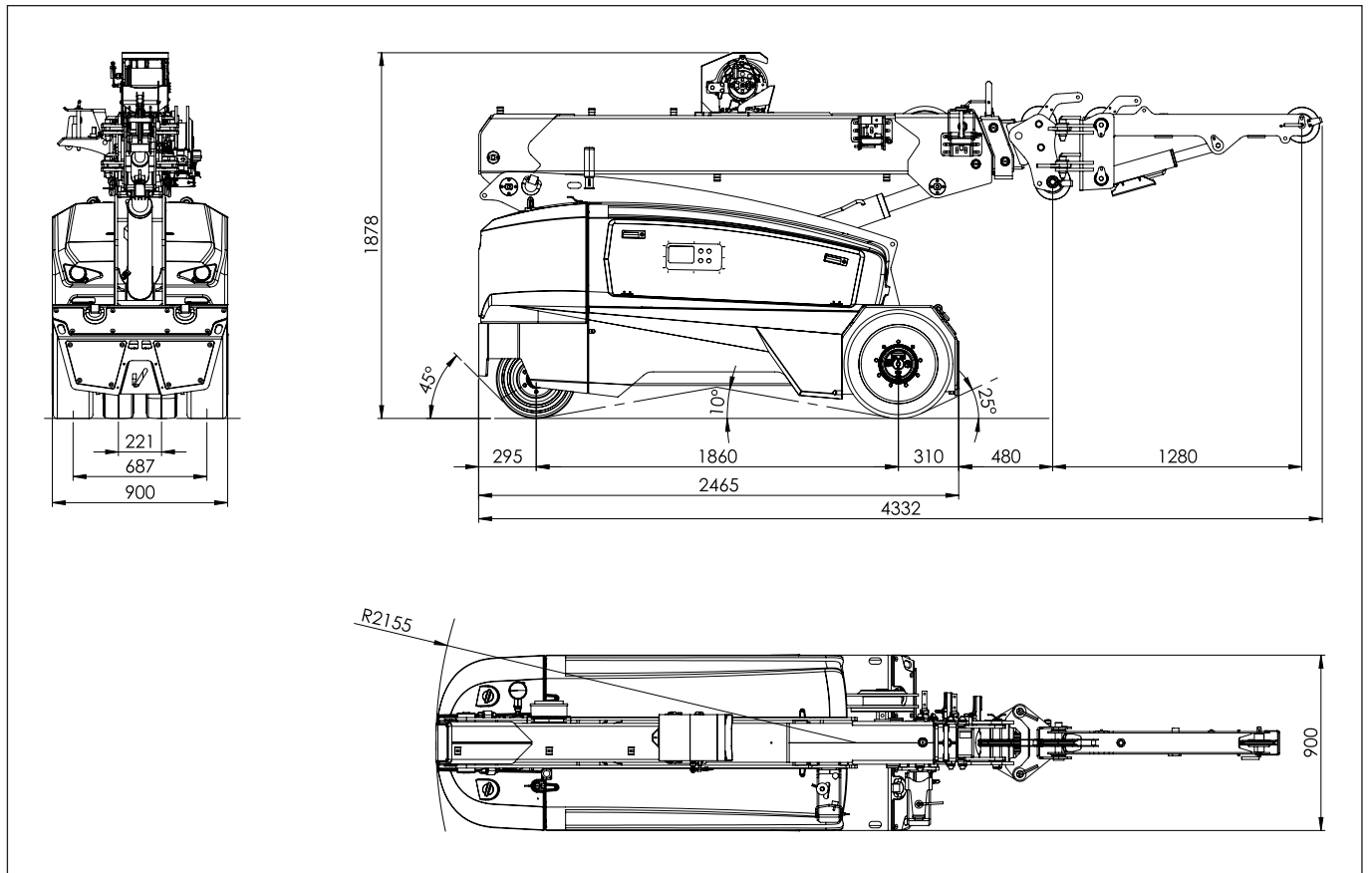
# V36R

Tabel

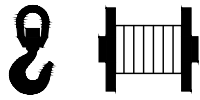


<b>Brakes</b>	
Electro-mechanical	2 x 80 V
<b>Remote control</b>	
Battery power supply	7.2 V
Battery	Rechargeable Scanreco
Actual battery duration	8 h
The intermittent turning on of the audible signal three times and the intermittent turning on of the indicator light indicate that the battery is about to run out.	
Degree of protection	IP 65
<b>Remote control battery charger</b>	
Battery charge voltage	11V DC - 30V DC
<b>Gewicht</b>	<b>3.650 kilo ballast 940kg</b>
Green light indicator	Charging phase
Action range including obstacles	100 m

## 10.2 Dimensional figure



# V36 R

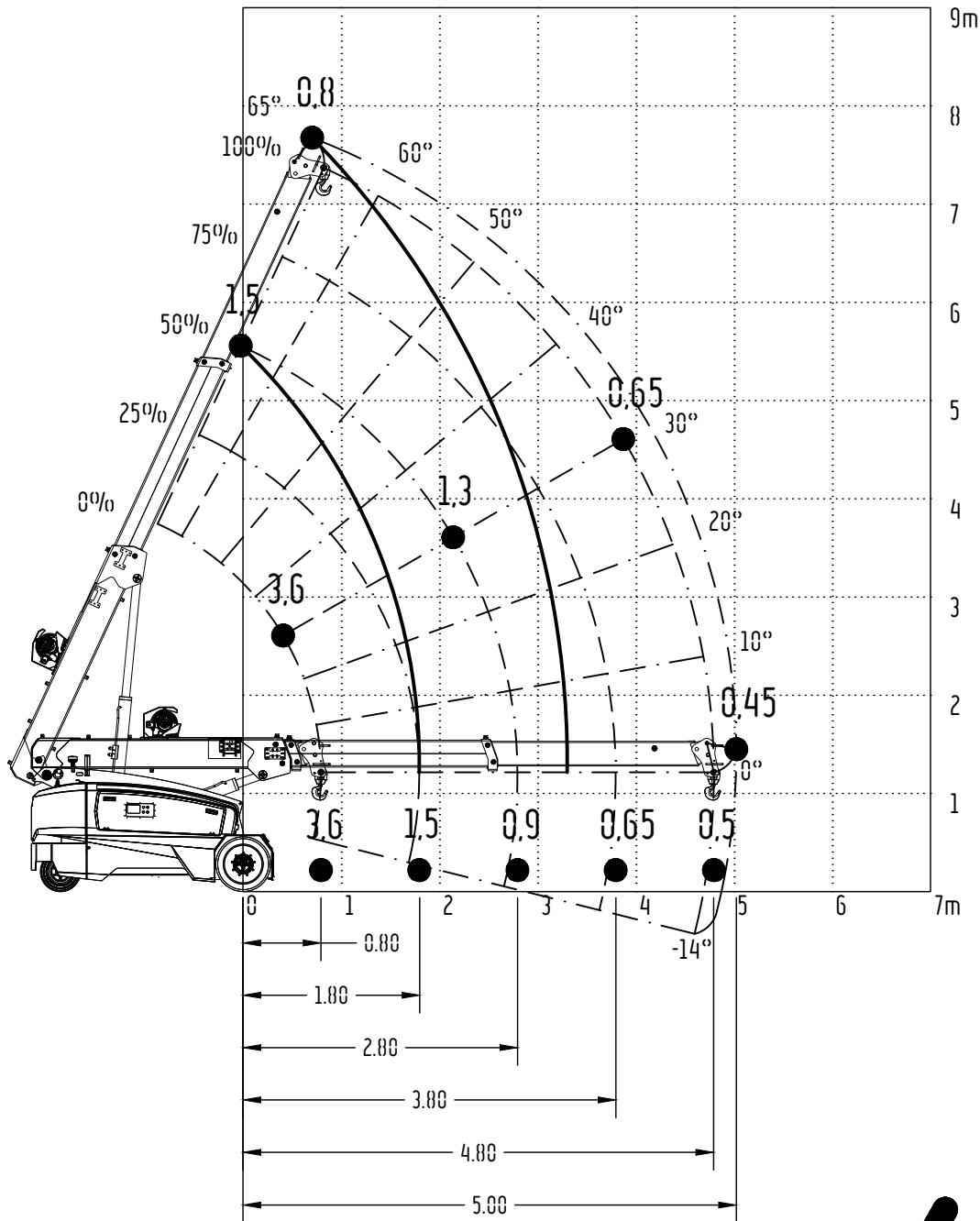


cod. 188.217.Rev A

## LOAD DIAGRAM (T)

DIAGRAMMA DELLE PORTATE (t)  
TABLEAU DES CHARGES UTILES (t)  
TRAGLASTDIAGRAMM (t)  
LASTENDIAGRAM (t)  
DIAGRAMA DE LAS CAPACIDADES DE CARGA (t)

© Copyright. TUTTI I DIRITTI RISERVATI

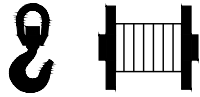


# ECRANES.eu

# Valla MANITEX

100% ELECTRIC Crane Solutions

# V36 R

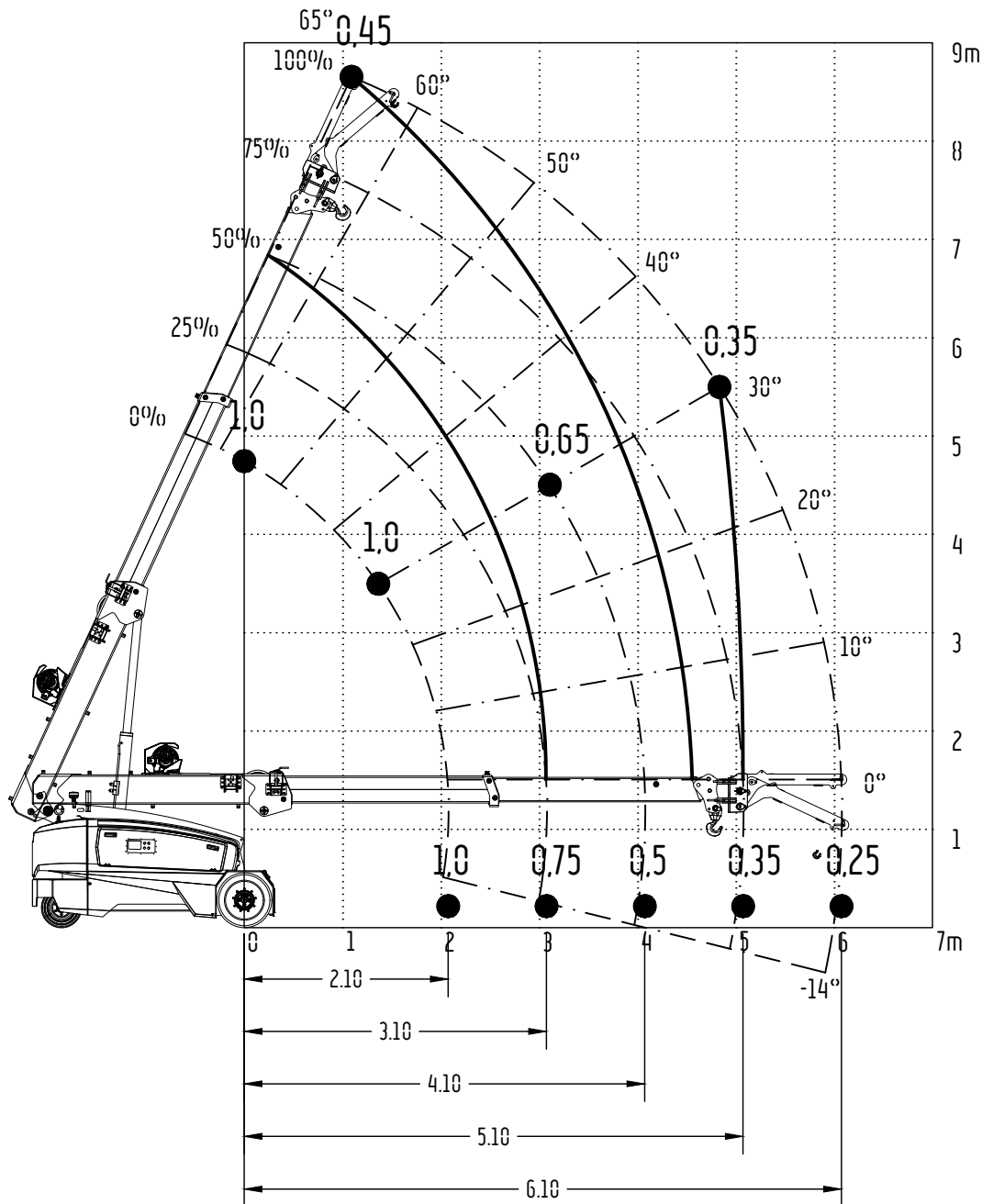


cod. 188.245.Rev A

## LOAD DIAGRAM (T)

DIAGRAMMA DELLE PORTATE (t)  
TABLEAU DES CHARGES UTILES (t)  
TRAGLASTDIAGRAMM (t)  
LASTENDIAGRAM (t)  
DIAGRAMA DE LAS CAPACIDADES DE CARGA (t)

© Copyright. TUTTI I DIRITTI RISERVATI

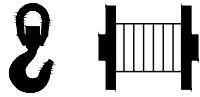


**ECRANES.eu**

**Valla**  
MANITEX

100% ELECTRIC Crane Solutions

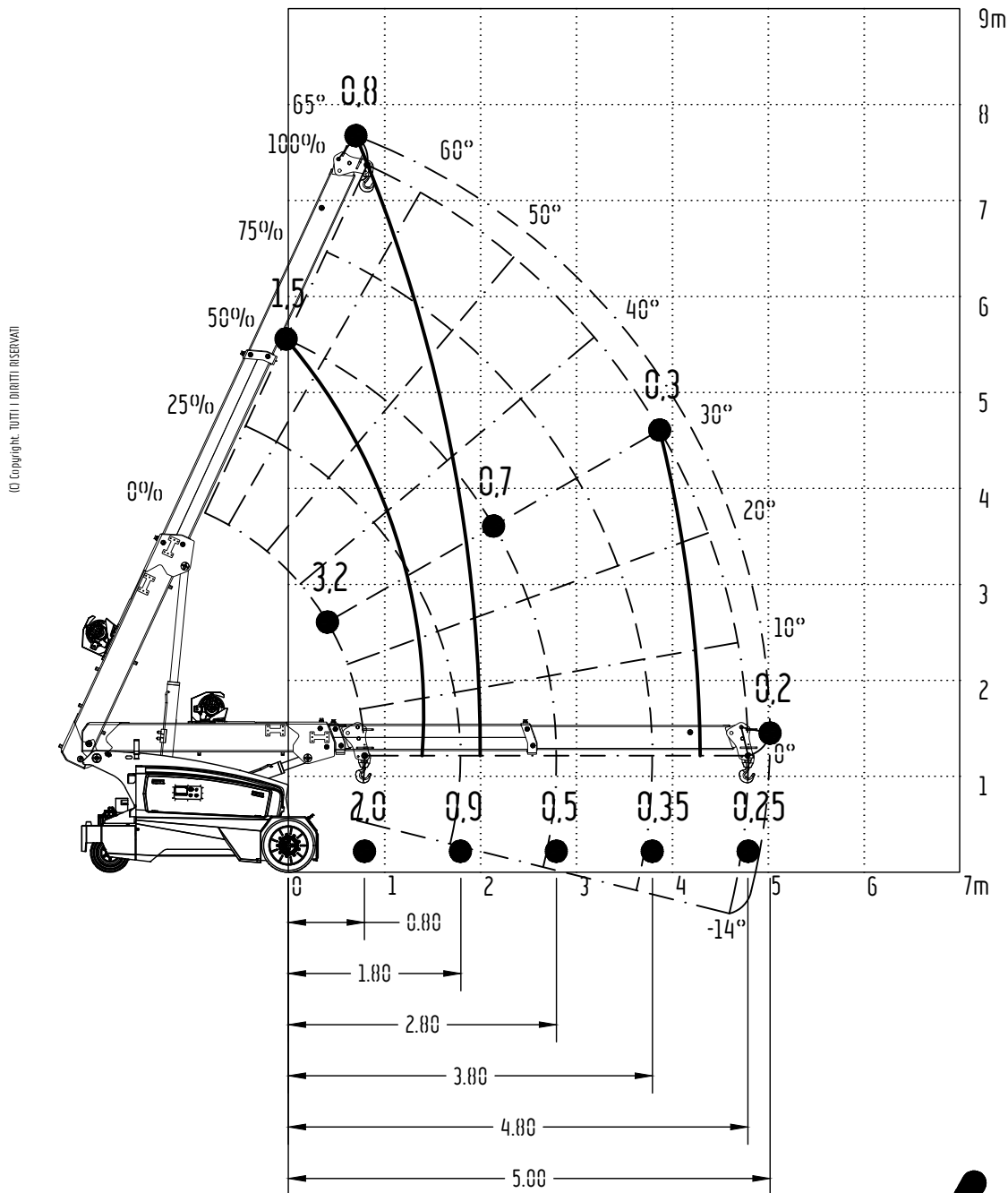
# V36 R



cod. 188.246.Rev A

## LOAD DIAGRAM (T)

DIAGRAMMA DELLE PORTATE (t)  
TABLEAU DES CHARGES UTILES (t)  
TRAGLASTDIAGRAMM (t)  
LASTENDIAGRAM (t)  
DIAGRAMA DE LAS CAPACIDADES DE CARGA (t)



**ECRANES.eu**

**Valla**  
MANITEX

100% ELECTRIC Crane Solutions



**V36 R**

**ECRANES.eu**

**Rotterdam**

**010-3220028**

**Info@ecranes.eu**

**www.ecranes.eu**